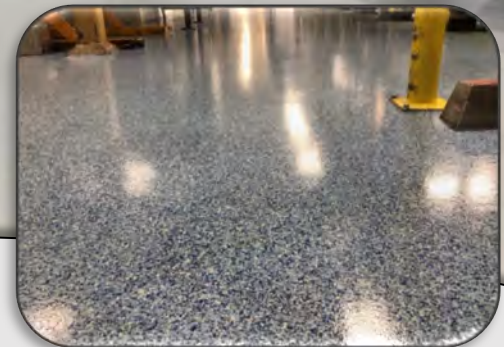
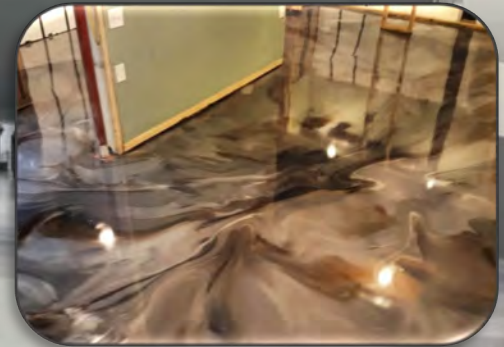


# Smith's

## INDUSTRIAL COATING SYSTEMS

**800-466-8781**  
[www.smithpaints.com](http://www.smithpaints.com)



- Heavy-Duty Systems  
(Epoxy Slurry & Epoxy Mortar)
- Cementitious Urethane Mortars
- Chemical Resistant Systems
- Moisture/Alkalinity Control
- Flexible Systems
- Metallic & Luster
- Broadcast Systems  
(Shop Floors, Quartz & Flake Systems)
- High Traffic Topcoats
- Light Reflective Systems
- Oil Remediation

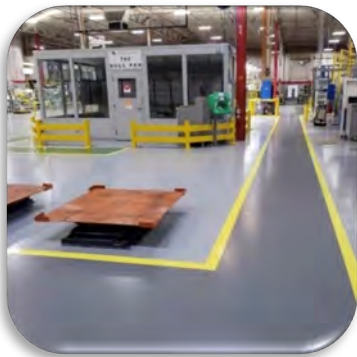




# Smith's PAINT PRODUCTS OUR HISTORY

Established **1929**  
FAMILY OWNED & OPERATED

Smith Paint Products began manufacturing paint in 1929 to supply the Central Pennsylvania marketplace. As market needs have changed and advanced over the years, we have developed thousands of specialized formulas for specific applications.

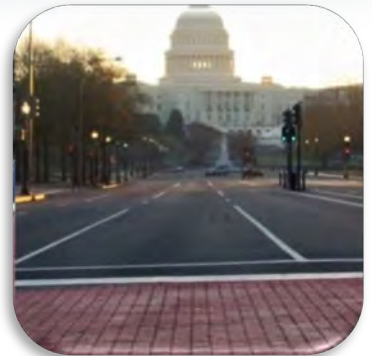


Today, Smith's focuses on the formulation and production of premium specialty coating products. Our range of products can be seen worldwide in a variety of different applications ranging from Food & Beverage and Industrial Manufacturing facilities to decorative concrete applications at Amusement and Theme Parks to Statues and Monument restorations, and much more.

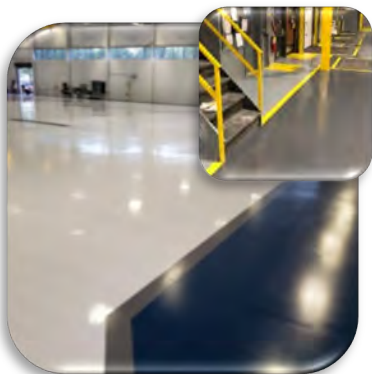


We realize to make a superior product, our standards must remain consistent by utilizing first-class manufacturing processes and raw materials along with stringent quality control measures. Our low overhead and exceptional buying power affords Smith Paint Products the ability to offer the value of affordable premium products to the marketplace.

At Smith Paint Products, company excellence is accredited to superior quality products and customer care. **#WeMakeFloorsBetter**







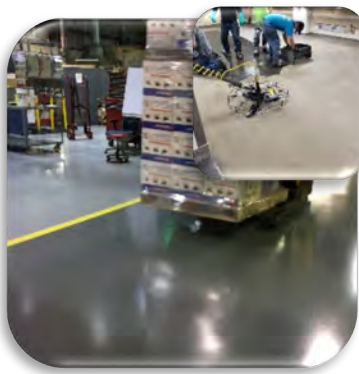
### THIN-MIL

Aviation & Light Reflective Systems,  
Grind & Seal



### BROADCAST

Shop Floor, Quartz & Flake



### HIGH BUILD RESURFACERS

Epoxy Mortars & Slurries,  
Cementitious Urethane Mortars



### DECORATIVE

Metallic Floor Coating Systems;  
Polished & Burnished Concrete; Stains & Dyes



## SYSTEM APPLICATIONS

#### THIN-MIL 3-Coat System

#### Metallic & Luster

Decorative 25  
to 50 mils

#### Vinyl Chip

Commercial  
Decorative  
Full Broadcast  
Vinyl Chip

#### Shop Floor

1/16" Single  
Broadcast  
Industrial  
Mild Texture  
Solid Color

#### Epoxy SLS100™

30 to 500 mil  
Heavy-Duty  
Impact Resistant  
Self-Leveling  
Epoxy Slurry

#### Color Quartz

1/8" average  
Double Broadcast  
Color Quartz

#### Epoxy Mortar

3/16" to 1/2"  
Power Trowel  
5-Coat Epoxy  
Mortar

### AVIATION / AEROSPACE

- HANGARS - EXECUTIVE
- HANGARS - MILITARY & MAINTENANCE
- MANUFACTURING

### AUTOMOTIVE

- SERVICE BAYS
- HEAVY TRUCK SERVICE
- MANUFACTURING
- SHOWROOMS

### CLEAN ROOMS

### FOOD & BEVERAGE

- AISLE WAYS
- COMMERCIAL KITCHENS  
(NO THERMAL SHOCK RISK)
- PRODUCTION/PROCESSING

### KENNELS

### LABORATORIES

### MANUFACTURING

- AISLES/WALKWAYS
- ASSEMBLY/PRODUCTION
- TOOLING / DIE CASTING

### MECHANICAL ROOMS

### MORGUES / MORTUARIES

### LOADING DOCKS

### WAREHOUSING

### VETERINARY CLINICS

### VIVARIUMS

■ (with UV Stable topcoat)	■ (with UV Stable topcoat)	■ (with UV Stable grout coat)	■ (with UV Stable topcoat)	■ (with UV Stable grout coat)	■ (with UV Stable topcoat)
■ (with UV Stable topcoat)			■ (with UV Stable topcoat)		■ (with UV Stable topcoat)
■			■		■
■	■ (Light Duty with appropriate topcoat)	■	■	■	■
			■	■ (≥90 mils)	■
■			■	■	■
■	■ (with appropriate topcoat)	■ (w/ UV Stable grout coat)	■	■ (with UV Stable grout coat)	■
■		■ (≤ Medium Duty)	■	■	■
			■	■	■
■		■ (≤ Medium Duty)	■	■	■
		■ (≤ Medium Duty)	■	■	■
		■	■	■ (with full broadcast & grout coat)	■
■	■	■	■	■	■
■			■	■	■
			■ (≤ Moderate Duty)	■ (≥60 mils)	■ (≤ Moderate Duty)
■		■	■	■	■
■		■	■	■	■
■		■	■	■	■
■		■ (≤ Medium Duty)	■	■	■
		■	■	■	■
■			■ (w/ topcoat)	■	■

For more detailed information, please click on product or system name



# Smith's EPOXY

2-COMPONENT EPOXY PRODUCTS & SYSTEMS

Our broad range of products affords the contractor the ability to meet or exceed the requirements of nearly all typical floor coating needs in Commercial, Industrial, Institutional, Pharmaceutical, Retail and Residential traffic environments.



## COLOR PACKS:

**ISC COLOR PACK**  
INDUSTRIAL SOLID COLORANT

**Industrial Solid Color Packs**  
for use in Smith's 100% solids Epoxy & Solvent-based Polyurethane or Polyaspartic products

**WSC**

**Waterborne Solid Color Packs**  
for use in Epoxy FW38, Epoxy VCB38, Poly-SEAL & Poly-WB

**Smith's METALLIC & LUSTER**  
Micro Blended Pigments For Metallic Floor Coatings

**11 Metallic Blends**  
for use in either Epoxy or Polyaspartic products

## SPECIALTY PRIMERS:

**EPOXY MAC100**  
Moisture/Alkalinity Control  
Regular Cure Primer

Low Permeability, Osmotic Moisture Vapor & Alkalinity Control Primer  
Extended Working Time

**EPOXY MAC125**  
Oil Stop & Moisture/Alkalinity Control  
Fast Cure Primer

Low Permeability, Osmotic Moisture Vapor & Alkalinity Control Primer  
Ultra-Fast Cure

- Low Permeability - Suppresses up to 25 lbs. with 9 to 14 pH (ASTM F1869) / 100% Relative Humidity (ASTM F2170)
- Extended 15-year Limited Moisture Vapor Warranty available when testing requirements are documented

**Smith's Enzymatic OIL CLEAN**  
Cleaner

**EPOXY MAC125**  
Oil Stop & Moisture/Alkalinity Control  
Fast Cure Primer

Oil Stop system

- Remediates oil saturated concrete substrates prior to resinous coating systems or traditional floor coverings

## MULTIPURPOSE EPOXY PRODUCTS:

**Epoxy FW38**  
38% Solids

Fast-Cure, Water-catalyzed  
38% Solids Epoxy Primer

- 1 hour Pot-life with 3 to 24 hour recoat window (72°F/50% Humidity)
- Clear; Smith's WSC Waterborne Solid Color Packs (Sold separately)

**Epoxy VCB38**  
FAST-CURE, WATERBORNE  
BASE COAT FOR VINYL CHIP

Fast-Cure, Low Odor, Base Coat for  
Full Broadcast Vinyl Chip Floor Coatings

- Sweep off excess chip within 2 hours (72°F/50% Humidity)
- Accepts Smith's WSC Waterborne Solid Color Packs (Sold separately)

**Epoxy MP300**  
100% SOLIDS  
MULTI-PURPOSE

Multipurpose, Extended Working Time  
100% Solids Epoxy

- 50 minute working time (72°F/50% Humidity)
- Available Clear, White, Black, Beige, or Light Gray
- Use for thin-mil, broadcast floors, epoxy mortar, etc. in Industrial, Commercial, or Residential environments

**EPOXY UCE200**

High Clarity, Decorative  
100% Solids Epoxy

Sold Separately:

**Smith's U.V. ABSORBER**  
Epoxy Additive

- 75 minute working time (72°F/50% Humidity)
- 100% Solids Epoxy optimized for leveling & clarity
- Ideal for Metallic & Luster, Vinyl Chip, Color Quartz, etc. in Commercial, Retail or Residential environments

**EPOXY U100**  
- Regular Cure

**EPOXY FC125**  
WINTER FORMULA  
UNIVERSAL EPOXY

Chemical  
Resistant  
Cycloaliphatic  
100% Solids Epoxy

- U100 Regular Cure (72°F to 85°F) OR FC125 Winter Cure (45°F to 65°F / Fast Curing > 65°F)
- Heavy-Duty, Chemical Resistant epoxy with 2 cure rate options for different installation temperature conditions:
  - FC125 (55°F slab & liquid temp) = 4 to 24 hours
  - U100 (72°F slab & liquid temp) = 4 to 24 hours

**THIXOTROPIC EPOXY GEL-150**  
Regular Cure

**THIXOTROPIC EPOXY GEL-150**  
Winter Formula

Thixotropic, 100%  
Solids Epoxy

- Gel-like consistency ideal for:
  - Cove, Patching, Vertical Applications, Grout Coats, Priming Highly Absorbent Substrates, Orange Peel Finish Textures & more
- Available in 3 convenient sizes in both Regular & Fast Cure formulas

## HIGH BUILD, HEAVY-DUTY RESURFACER:

**EPOXY SLS100**  
Regular Cure, 2-Component  
Self-Leveling, Heavy-Duty Slurry

**EPOXY SLS125**  
Apply between  
50°F to 65°F  
Winter Formula 2-Component  
Self-Leveling, Heavy-Duty Slurry

Heavy-Duty 100% Solids,  
Chemical Resistant  
Self-Leveling Epoxy Slurry  
(Install @ 30 to 500 mil neat;  
may be extended with pea stone)

- Impact & Chemical Resistant Epoxy Slurry
- Accepts Full Traffic overnight (Epoxy SLS100 @ 72°F OR Epoxy SLS125 @ 60°F)
- No airborne silica fume while mixing (2-Component - Part A contains aggregate)
- Chemical & Impact Resistant - Ideal for resurfacing eroded concrete in Heavy Traffic areas, including forklifts, next day (@ 72°F/40% Humidity)

**EPOXY HD-100**  
5-COAT EPOXY  
MORTAR SYSTEM  
SOLID COLOR CHEMICAL RESISTANT  
POWER-TROWEL HEAVY-DUTY MORTAR

**EPOXY HDQ-100**  
5-COAT COLOR QUARTZ  
EPOXY MORTAR SYSTEM  
COLOR QUARTZ CHEMICAL RESISTANT  
EPOXY POWER-TROWEL MORTAR SYSTEM

**EPOXY FRM**  
FAST-CURE 100% SOLIDS  
EPOXY REPAIR MORTAR

- High Build, 5-coat Epoxy Mortar systems
- Apply greater than 3/16"
- Accepts forklift & other heavy traffic next day
- Natural or ISC solid color (Epoxy HD-100 system) OR Color Quartz (Epoxy HDQ-100 system)
- Heavy traffic ≤8 hours (@ 72°F)
- High strength
- 2 Convenient kit sizes for repairs
- Durable - Impact & Abrasion Resistant

For more detailed information, please click on product or system name



# Smith's POLYASPARTIC

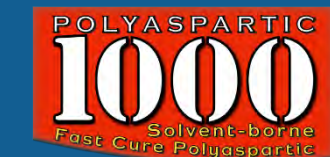
## ALIPHATIC 2-COMPONENT



Polyaspartic is the ideal choice when fast turn-around, U.V. stability and clarity are necessary.

Smith Paint Products set out to develop Polyaspartic products that were easier to apply than typical competitive Polyaspartics.

Roller grade formulas are great for Metallic & Luster, Vinyl Chip, broadcast floor coating systems, etc. where short waiting periods between coats and overnight return-to-service are desired.



- Fast Cure, 76% Solids Formula
- 1:1 mix Ratio
- 30-minute working time (72°F/40% Humidity)
- Recoat in 2-3 hours (72°F/40% Humidity)



- Long Pot-Life, 76% Solids Formula
- 1:1 mix Ratio
- 45-minute working time (72°F/40% Humidity)
- Recoat in 4-5 hours (72°F/40% Humidity)

### OPTIONAL SOLID COLOR PACKS:

*Smith's*  
**ISC COLOR PACK**  
INDUSTRIAL SOLID COLORANT



- 87% Solids, Low Odor, Higher Build
- 2:1 mix Ratio
- 30-minute working time (72°F/40% Humidity)
- Recoat in 6 hours (72°F/40% Humidity)



Spray Grade - Specifically developed for HVLP spray applications



- 1:1 mix Ratio
- 30-minute working time (72°F/40% Humidity)



Each series meets VOC requirements for all OTC regions as well as the South Coast Air Quality Management District.

For more detailed information, please click on product name for Hyperlink to website



# Smith's POLYURETHANE

Topcoats, Primer/Sealers, Membranes,  
Crack/Patch Filler, Joint Filler

## POLYURETHANE TOPCOATS

For more detailed information, please click on product name hyperlink

### HIGH TRAFFIC CRU - LOW SHEEN, LOW ODOR

CHEMICAL RESISTANT POLYURETHANE  
**HI-WEAR 90S**  
Low Sheen CRU Topcoat  
3-Component, High Traffic, Low Sheen Topcoat

- Low Odor, High Traffic CRU Formula
- Up to 2 hour working time (72°F/40% Humidity)
- Full traffic the following day
- Chemical Resistant to most Acids Caustics, Solvents, etc.



### ALIPHATIC CHEMICAL RESISTANT URETHANE TOPCOAT - HIGH GLOSS, 86% SOLIDS



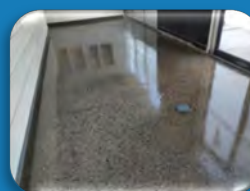
- Low Odor, High Traffic CRU Formula
- Up to 2 hour working time (72°F/40% Humidity)
- Full traffic the following day
- Chemical Resistant to most Acids Caustics, Solvents, etc.
- Abrasion Resistant – Highly Durable
- Accepts Smith's ISC Color Packs

Chemical Resistant Polyurethane  
**CRU '86**  
High Gloss  
Aliphatic • Ready-to-Use • Low Odor

### ALIPHATIC MOISTURE-CURED URETHANE TOPCOAT - HIGH GLOSS, SOLVENT-BASED

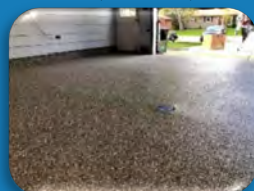
POLYURETHANE  
**MCU-60**  
Premium, High-Performance  
Moisture Cured Aliphatic Polyurethane

- High Solids, High Performance
- U.V. Resistant
- 30 minute working time (72°F/40% Humidity)
- Recoat in 4 to 5 hours (@72°F/40% Humidity)
- Chemical & Abrasion Resistant
- Light Reflective Gloss Finish
- Ready-to-Use Clear or tint with Smith's ISC Color Packs (Sold Separately)



### WATER-BASED POLYESTER / POLYURETHANE TOPCOAT

WATERBORNE POLYURETHANE  
**Poly-WB**  
Gloss or Low Sheen  
55% Solids Aliphatic Polyurethane Topcoat/Sealer



- Durable & Chemical Resistant Sealer
- Clear or tint with Smith's WSC Waterborne Solid Color Packs (Sold Separately)
- Recoat up to 24 hours (72°F/40% Humidity)

- Low Odor & Low VOC
- 1-hour Pot-life with Good Working time (72°F/40% Humidity)
- Interior/Exterior use – U.V. Stable

### PRIMER FOR POLY-WB (DIRECT-TO-CONCRETE)

POLYURETHANE SEALER/PRIMER  
**Poly-SEAL**  
Primer for Poly WB  
Direct-to-Concrete  
Waterborne Polyurethane/Acrylic Primer/Sealer  
Roll • Brush • Spray

- Use as a direct-to-concrete primer prior to installing Poly-WB
- Seal coat for light commercial traffic Vinyl Chip systems prior to Smith's Poly-WB
- Add Smith's WSC color packs for solid color

### FLEXIBLE MEMBRANE - SELF-LEVELING RESURFACER

POLYURETHANE  
**Poly-FLEX**  
Suppresses up to  
15 lbs. & 90% RH  
2-Component, Polyurethane Self-Leveling Resurfacer

- Self-Leveling from 30 to 500 mils
- Low Odor, 100% Solids Polyurethane
- Flexible yet Rigid
- Suppresses up to 15 lbs. & 90% RH
- 20-minute Flow Time (72°F/40% Humidity)
- Recoat in 4-5 hours (72°F/40% Humidity)



### PATCH & CRACK FILLER

RAPID CURING

**POLY PCF45**  
Bridge Deck Repairs  
Crack Filler • Pit Grout  
Patch  
Rapid Cure, Ultra Low Viscosity  
2-Component Polyurethane

LIGHT GRAY, CREAMY  
POLYURETHANE  
**SKM**  
Fast Cure, 2-Component, 100% Solids  
Creamy Smooth Consistency Skin-coat

### JOINT FILLER

POUR GRADE, SELF-LEVELING

Semi-Rigid  
Smith's Joint Filler  
**Poly JF**  
100% Solids  
Polyurethane

Smith's Polyurethane Joint Filler  
**Poly JF/FC**  
FAST-CURE  
SEMI-RIGID  
100% SOLIDS





# Smith's POLYURETHANE

Topcoats, Primer/Sealers, Membranes,  
Crack/Patch Filler, Joint Filler

## Smith's CPR Cementitious Polyurethane Resurfacer Mortar Series

Smith's CPR Cementitious Polyurethane Resurfacers are 3-component, mortar mix products used to resurface & protect floors susceptible to Thermal Shock as well as water erosion. CPR products work well in constant damp conditions, such as food processing environments, car washes, & floors with slightly elevated moisture emission levels up to 85% Relative Humidity & up to 10 lbs. as well as new concrete (≥10 days old).



For more detailed information, please click on product Hyperlink to website

CEMENTITIOUS POLYURETHANE RESURFACER

### CPR-HD HEAVY-DUTY Trowel Grade Mortar

- Great for repetitive wash down areas & damp environments
- Resists Impact & Abrasion from Castors / Pallet Jacks / Forklift Traffic
- High Thermal Shock Resistance
- Chemical Resistant to most  
- Acids, Bases, Solvents, Alcohols & Sanitizers
- Approved for Service Temperatures  
-330°F to 250°F

CEMENTITIOUS POLYURETHANE RESURFACER

### CPR-MID MODERATE-DUTY Flowable Rake & Trowel Mortar

- Great for repetitive wash down areas & damp environments
- Accepts broadcast media
- Durable - Resists  
- Impact / Abrasion / Wheeled Traffic
- Thermal Shock Resistant
- Chemical Resistant to most  
- Acids, Bases, Solvents, Alcohols & Sanitizers
- Approved for Service Temperatures  
-100°F to 230°F

CEMENTITIOUS POLYURETHANE RESURFACER

### CPR-SL MEDIUM-DUTY Self-Leveling Grade

- Ideal for repetitive wash down & damp environments
- Accepts broadcast media
- Durable - Resists Abrasion & Impact
- Thermal Shock Resistant
- Chemical Resistant to most  
- Acids, Bases, Solvents, Alcohols & Sanitizers
- Approved for Service Temperatures  
-40°F to 200°F



# SOLID COLOR PACKS

**Smith's**  
**ISC COLOR PACK**  
INDUSTRIAL SOLID COLORANT  
FOR USE IN 100% SOLIDS EPOXY,  
SOLVENT-BASED POLYURETHANES  
& POLYASPARTICS

FOR USE IN: **Smith's**  
**WSC**

**FW38** 36% Solids  
**SEAL**  
**VCB** 36% Solids  
**Poly-SEAL**  
**Poly-WB**

**Smith's**  
**Dry Pigment Packs**  
INTEGRAL COLOR POWDER PIGMENT  
FOR USE IN: **CPR**

## DECORATIVE SYSTEMS



**Smith's**  
**METALLIC & LUSTER**  
Mica Blended Pigments for  
Metallic Floor Coatings



The popularity of resinous metallic floor coatings has sky rocketed in recent years, due in large part to the stunning & unique appearance coupled with ease of maintenance & durability.

Smith's offers Metallic & Luster in a traditional Epoxy based system with a Polyurethane topcoat to improve abrasion, chemical & stain resistance as well as a fast curing & U.V. Stable Polyaspartic system. Both system types afford applicators a variety of color combinations to achieve ideal mottling flow for exquisite aesthetics.

**Smith's**  
**DOUBLE BROADCAST - 1/8" THICK**  
**COLOR QUARTZ**

**Smith's**  
**EPOXY** 5-COAT COLOR QUARTZ  
EPOXY MORTAR SYSTEM  
**HDQ-100**  
COLOR QUARTZ CHEMICAL RESISTANT  
EPOXY POWER-TROWEL MORTAR SYSTEM

Smith's Color Quartz systems are highly durable yet decorative, seamless 1/8" to 1/2" finished thickness floor coating with optional seamless cove systems which can be utilized with different resinous product matrix' to suspend the Quartz. Systems range from double broadcast Epoxy or Polyaspartic to Cementitious Urethane, Poly-FLEX & trowel applied Epoxy based mortar systems as well as seamless cove base.

Various textures may be achieved depending on how smooth or textured of a surface is desired.



**Smith's**  
**VINYL CHIP**  
1/4" VINYL CHIP BROADCAST BLENDS

Smith's Vinyl Chip Systems yield a decorative, seamless resinous floor coating system ideal for retail, commercial, schools, offices, Medical & Veterinary, Kennels, as well as Residential applications, both interior or \*exterior (when utilizing a Polyaspartic system).

Systems allow for varying amounts of broadcast ranging from random to full into different base coatings depending on the return-to-service, U.V. stability, traffic/service exposure and acceptable odor at the time of application. Broadcast into Epoxy, Polyaspartic, Poly-FLEX or CPR Cementitious Polyurethane Resurfacers.



Smith Paint Products® • 2200 Paxton Street, Harrisburg, PA 17111  
www.smithpaints.com (717) 233-8781

